

# KNIGHT SOLUTIONS LIMITED

POWERING THE NEW GENERATION



+260 966 326 630 / 0977 686 095



+260 963 809 742 / 0972 550 080



[knightolutionskt@gmail.com](mailto:knightolutionskt@gmail.com)

# INTRODUCTION

Knight Solutions Zambia Limited (KSL) is an indigenous Zambian owned Electrical and Construction Company registered in 2013 under the companies act cap 389 of the laws of Zambia. We are registered with the Engineering Institution of Zambia (EIZ) and National Council for Construction(NCC) - (Category E and R).

Our objective is to become a leading supplier of Electrical and Construction solutions by effeciently executing our works and to attain maximum reliability and customer loyalty.

## KEY STAFF



**Patrick Chiluba**  
*Director*



**Fortune Nalube**  
*Director*



**Mumpanshya Bowa**  
*Director*



**Rodgers Phiri**  
*Manager*



**Haggai Phiri**  
*Operations*

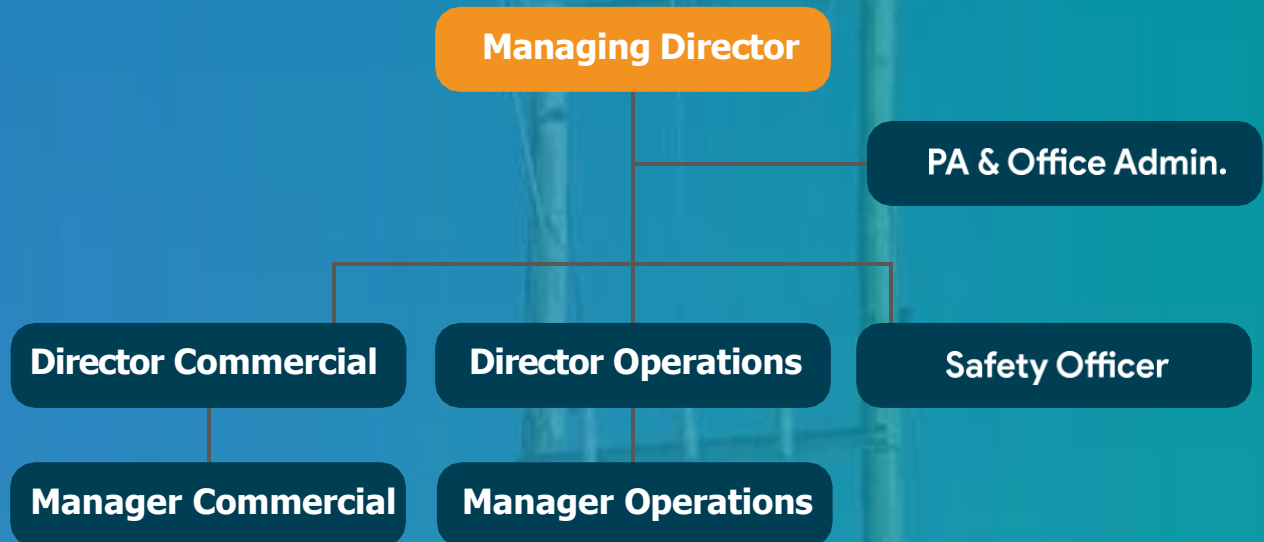


**Davies Mushili**  
*Operations*

## MISSION

Ensure total customer satisfaction through the provision of high quality products and services at competitive prices. We maintain extremely high standards of professionalism, ethics and safety consciousness in the dispensation of service to our customers.

# ORGANOGRAM & REGISTRATIONS



## Statutory Bodies Registrations:

1. National Council for Construction
2. Engineering Institution of Zambia
3. Engineering Registration Board
4. Zambia Public Procurement Authority
5. Zambia Revenue Authority
6. Citizens Economic Empowerment Commission
7. Workers Compensation Fund Control Board
8. National Pension Scheme Authority

## COMPANY SERVICES

- **Supply, Installation and Commissioning of Low and Medium Voltage Switchgears**
- **Transformer oil filtration**
- **Construction of Substations up to 31.5 MVA**
- **Installation & Repair of Generators & Automatic Transfer Switches**
- **Overhead Line Construction Up to 66kV**
- **Installation of Outdoor and Indoor Sub-Stations**
- **Power Factor Correction Studies**
- **Load Flow Studies**
- **Supply of 9m, 10m, 12m, & 14m Wooden Poles**
- **Internal Wiring & Certification General**
- **Electrical Services**

# OUR WORKS



POWERING THE NEW GENERATION

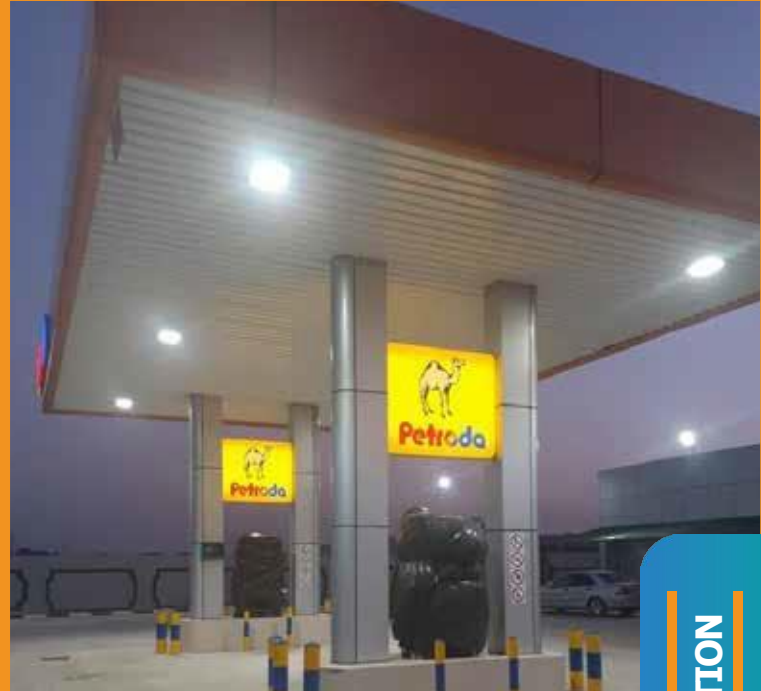
# ELECTRICAL DISTRIBUTION WORKS



POWERING THE NEW GENERATION

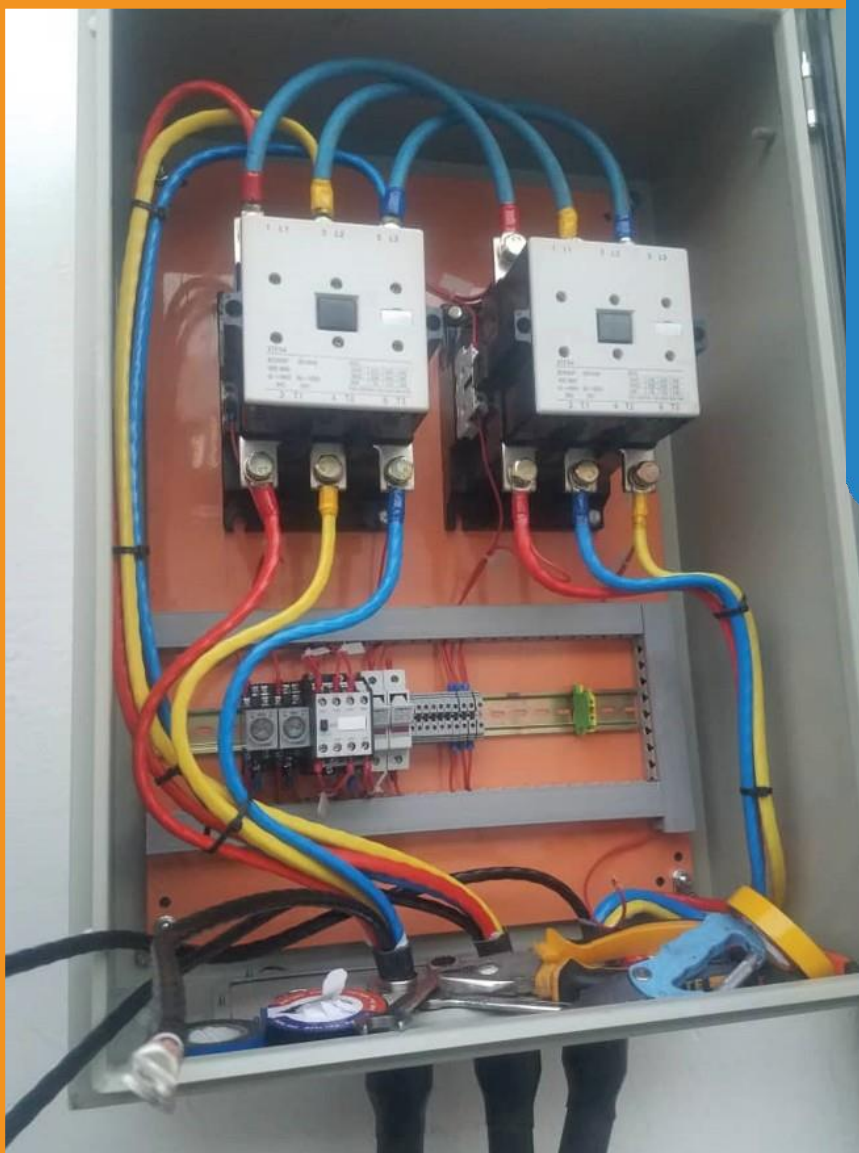


# ELECTRICAL DISTRIBUTION WORKS



POWERING THE NEW GENERATION

# INSTALLATION & REPAIR OF GENSETS & AUTOMATIC TRANSFER SWITCHES



POWERING THE NEW GENERATION

# REFERENCES



# WE ARE ALSO SPECIALIZED IN THE SUPPLY OF POLES



POWERING THE NEW GENERATION



**KNIGHT SOLUTIONS  
LIMITED**

POWERING THE NEW GENERATION

**Est-2013**